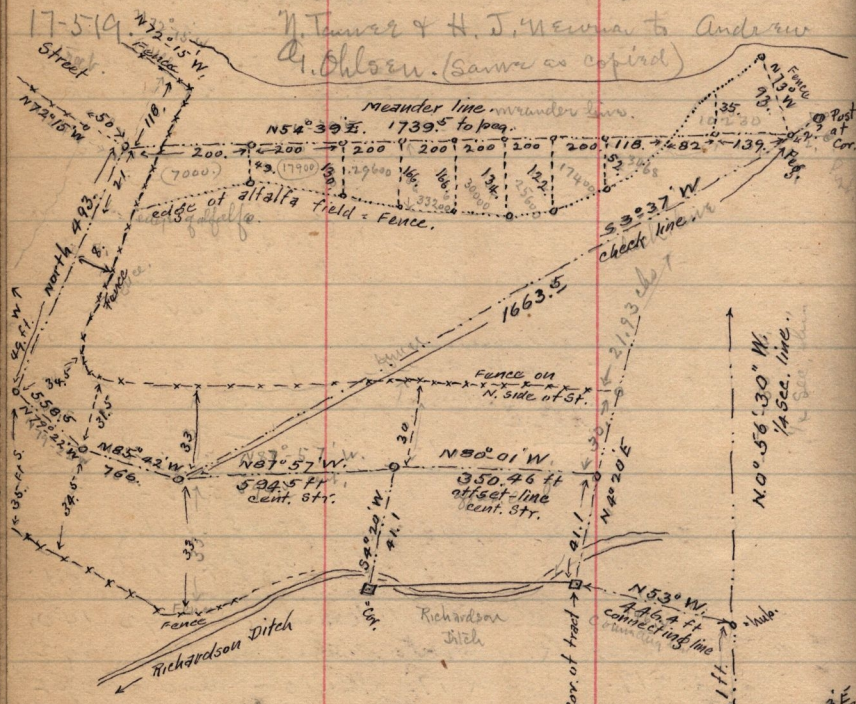


25-41 - Tammar & Newman to Nathan A. Tammar  
 Pt S. E. 1/4 Sec. 30, T. 6. N - R. 1. W. - Brg. 1403.  
 pt. 509° 2' W. of pt 338. pt 50° 45' W.  
 of N. 1/2 Sec. cor. of 1/4 - E. 49 1/2 ft. S  
 of 45' W. to pt. 43. pt. N. of center of  
 Canal. N. W. to Point S. of bridge.  
 N. to long. with 1/4 of W. upon alley  
 on N.

N. Tammar & H. J. Newman to Andrew  
 A. Olsen. (same as copied)



	N	S	E	W.
N54°39'E	1739.5	1206.3	1418.7	
S32°37'W	1663.5	1660.2	104.8	
N85°42'W	766.0	57.4	763.8	
N79°22'W	558.5	103.3	545.9	
N	493.3	493.3		
	1659.7	1666.5	1418.7	1417.5

Sept 30-1898.  
 Subdivision of the  
 Jos. Mooney track, in  
 S.W. 1/4 Sec. 30, T. 6. N - R. 1. W.  
 for J. T. McEntire & Jas. Cowan.

N39°03'E  
 to Benlo...  
 P.W.  
 S.E. Cor.  
 S.W. 1/4 Sec.  
 3, T. 6. N. R.  
 1. W.  
 a. stony,  
 a slow